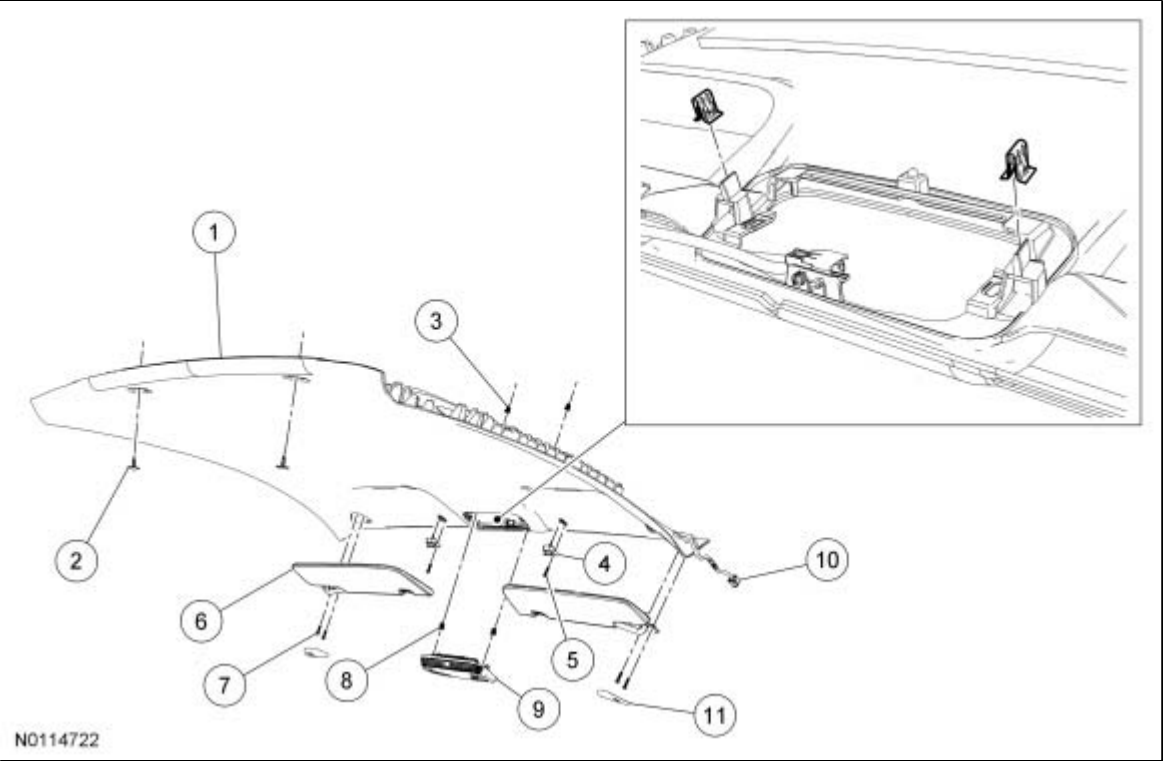


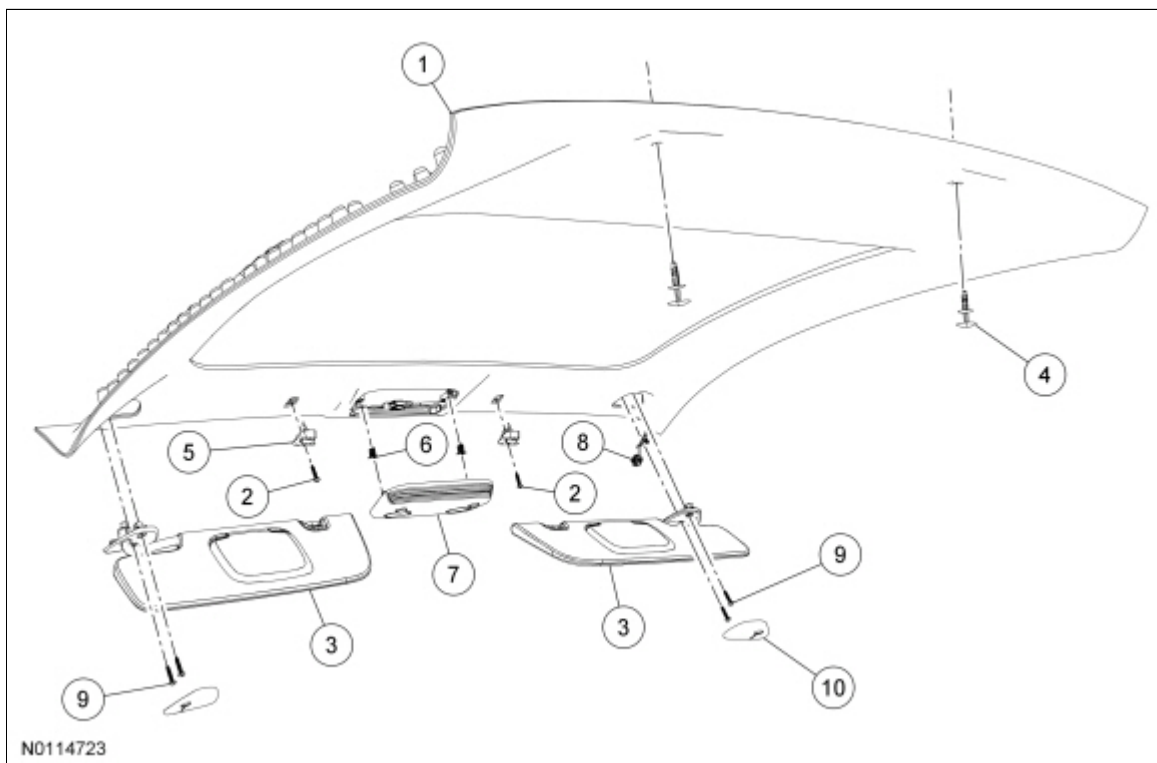
Headliner

Coupe



Item	Part Number	Description
1	6351916	Headliner
2	W714340	Headliner pushpin retainer (2 required)
3	—	Headliner retaining clip (2 required) (part of 6351916)
4	04132	Sun visor arm clip (2 required)
5	—	Sun visor arm clip screw (2 required) (part of 04132)
6	6304104 LH/ 6304105 RH	Sun visor
7	—	Sun visor screw (4 required) (part of 6304104 LH/ 6304105 RH)
8	—	Overhead console retaining clip (2 required) (part of 519A58)
9	519A58	Overhead console wire harness
10	14334	Overhead console wire harness
11	046B96 RH/ 046B97 LH	Sun visor bracket cover

Glass Roof



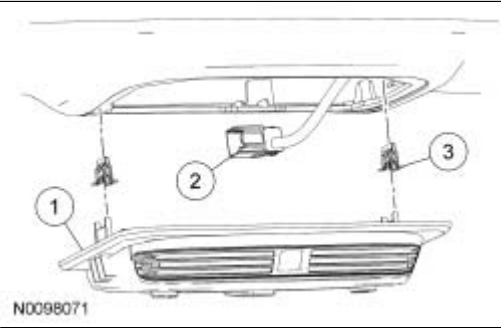
Item	Part Number	Description
1	51968	Headliner
2	—	Sun visor arm clip screw (2 required) (part of 04132)
3	6304105 LH/ 6304104 RH	Sun visors (2 required)
4	W714340	Headliner pin-type retainer (2 required)
5	04132	Sun visor arm clip (2 required)
6	—	Overhead console clip (part of 519A58)
7	519A58	Overhead console
8	—	Headliner electrical connector (part of 51968)
9	—	Sun visor screw (4 required) (part of 6304104 LH/ 6304105 RH)
10	046B96 RH/ 046B97 LH	Sun visor bracket cover

## Removal and Installation

1. Remove the quarter window trim panel. For additional information, refer to [Quarter Window Trim Panel](#) in this section.
2. Remove the LH and RH A-pillar trim panels. For additional information, refer to [A-Pillar Trim Panel](#) in this section.
3. Remove the sun visor bracket covers.
4. Remove the 6 sun visor screws, the 2 sun visors and the 2 sun visor arm clips.
  - If equipped, disconnect the sun visor electrical connectors.
5. Remove the overhead console. For additional information, refer to [Section 501-12](#)
6. Remove the 2 headliner pin-type retainers.

7. Disconnect the headliner electrical connector and remove the headliner.
  8. **NOTE:** A new headliner will need to be installed if the headliner is folded during removal or installation.  
To install, reverse the removal procedure.
-

Console — Overhead



Item	Part Number	Description
1	519A58	Overhead console
2	14401	Overhead console electrical connector
3	W704021	Overhead console retaining clip (part of 519A58) (2 required)

Removal and Installation

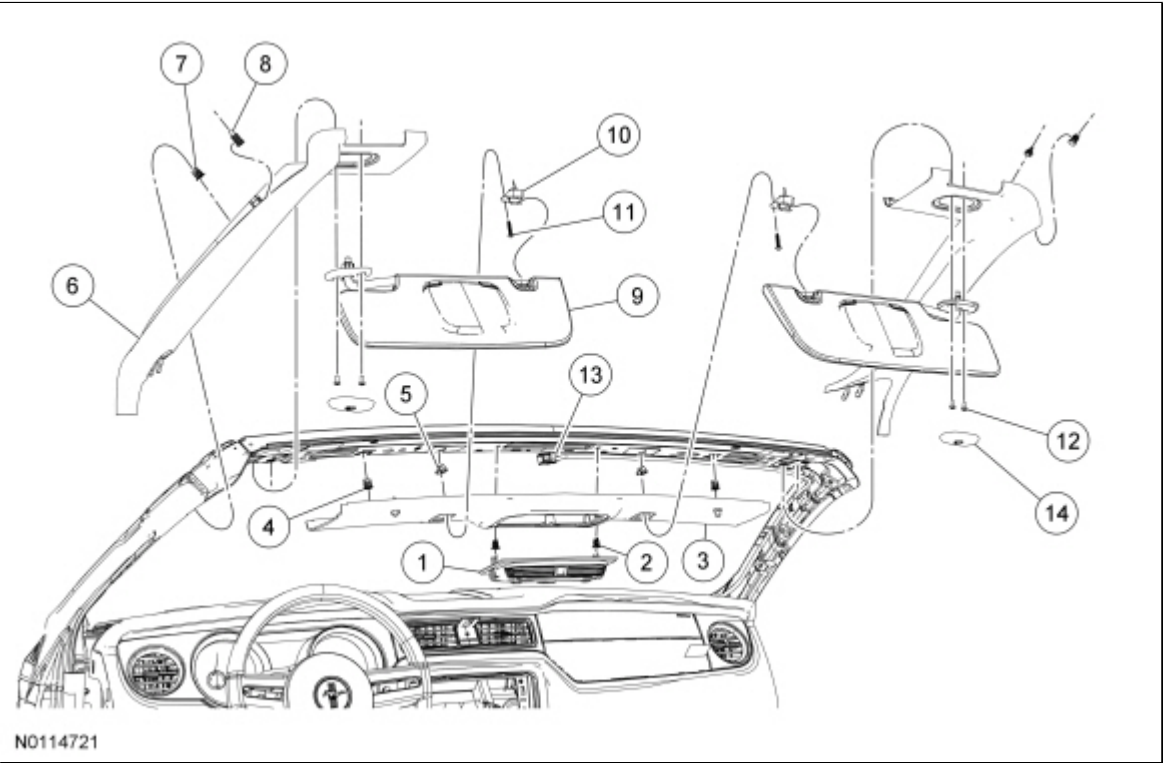
**NOTE:** The ignition must be in OFF position if disconnecting the Passenger Air Bag Deactivation (PAD) indicator electrical connector. Otherwise, a DTC will be set in the Restraints Control Module (RCM) memory and must be cleared before releasing the vehicle.

**NOTE:** If the new overhead console is equipped with a intrusion and inclination sensor it is necessary to reconfigure the BCM-B. Refer to Intrusion and Inclination Sensor replacement in [Section 419-01A](#).

1. Turn the ignition OFF and wait at least one minute.
2. Remove the overhead console in the following sequence.
  1. Pull the overhead console straight down, releasing the 2 side retaining clips.
  2. Disconnect the electrical connector(s).
3. To install, reverse the removal procedure.

A-Pillar Trim Panel

**NOTE:** Convertible shown, coupe similar.



Item	Part Number	Description
1	6351A58	Overhead console
2	W704021	Overhead console retainer (2 required)
3	760387	Header trim panel
4	W704021	Header trim panel retainer (2 required)
5	1704100	Sun visor clip insert (2 required)
6	7603599 LH/ 7603598 RH	A-pillar trim panel
7	W704021	A-pillar trim panel retaining clip
8	7603598	A-pillar trim panel pushpin
9	6304105 LH/ 6304104 RH	Sun visor
10	6304132	Sun visor clip
11	—	Sun visor clip screw (2 required) (part of 6304132)
12	—	Sun visor screw (4 required) ( part of 6304105 LH/6304104 RH)
13	14334	Overhead console wiring harness
14	76046B96	Sun visor bracket cover (2 required)

Removal and Installation

1. Remove the sun visor bracket cover.
2. Remove the 2 sun visor screws and set the sun visor aside.
3. Pull outward on the A-pillar trim to release the retaining clip and the pushpin from the body.
4. Pull slightly down and straight back on the A-pillar to unhook the front lower portions of the A-pillar trim panel.
5. **NOTE:** To avoid any damage to the A-pillar trim panel, remove any clips from the body and attach them to the A-pillar trim panel.

To install, reverse the removal procedure.

---

## Quarter Window Trim Panel

### Removal and Installation

1. **NOTE:** On the coupe, install the front locating hook, then snap the A-pillar trim panel in place, working rearward.

Remove the 2 A-pillar trim panels. For additional information, refer to [A-Pillar Trim Panel](#) in this section.

2. Remove the rear quarter trim panel. For additional information, refer to [Quarter Trim Panel — Coupe](#) in this section.
  3. Open the garment hook cover. Remove the bolt and garment hook.
  4. Remove the upper front safety belt anchor bolt cover and bolt.
    - To install, tighten to 48 Nm (35 lb-ft).
  5. Remove the quarter window trim panel, by pulling outward.
  6. To install, reverse the removal procedure.
-

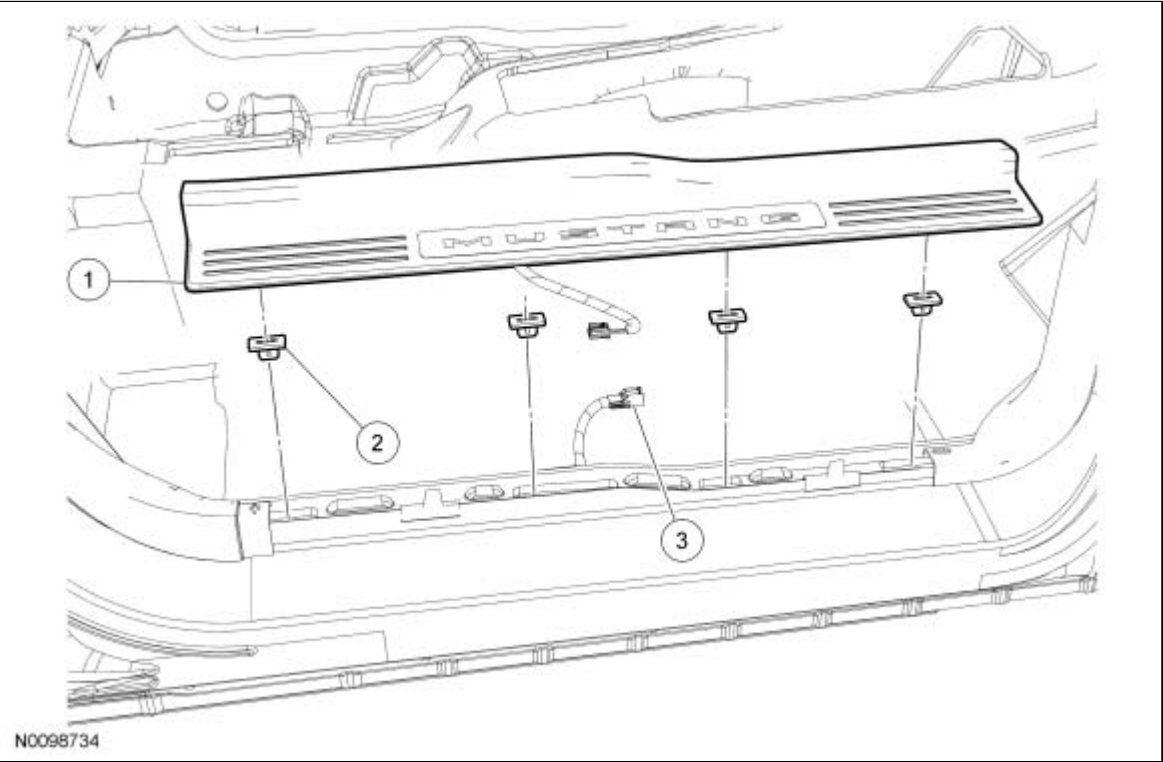
## Quarter Trim Panel — Coupe

### Removal and Installation

1. Remove the door scuff plate. For additional information, refer to [Scuff Plate Trim Panel](#) in this section.
  2. Remove the quarter trim panel lower pin-type retainer.
  3. Release and fold the rear seat forward, remove the 2 pushpin retainers and the rear quarter trim panel.
  4. To install, reverse the removal procedure.
-



Scuff Plate Trim Panel



Item	Part Number	Description
1	6313209 LH/ 6313209 RH	Scuff plate trim panel
2	—	Scuff plate trim panel retaining clips (4 required) (part of 6313209 LH/ 6313209 RH)
3	14A005	Scuff plate trim panel electrical connector

1. **NOTICE:** To avoid damage to the scuff plate trim panel, remove any retaining clips from the body and attach them to the scuff plate trim panel before installing.  
  
Remove the front door scuff plate trim panel by lifting straight up on the front and rear edge of the scuff plate trim panel to release the 4 lower retaining clips.
2. Disconnect the door scuff plate trim panel electrical connector.
3. Remove the door scuff plate trim panel.
4. To install, reverse the removal procedure.